

Fully Integrated Cargo Insulation Systems

for Mercedes-Benz Sprinter and Metris Vans





Gruau

Gruau (grū-ō) is a France-based company that specializes in van-based commercial upfits. Gruau-USA has partnered with Phenix to bring their products to the United States. IsoVan products have been produced in Europe since 1976. These decades of experience have allowed Gruau to refine their product into the current industry leader in quality and performance.

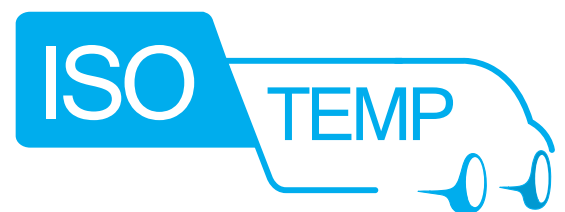
IsoVan

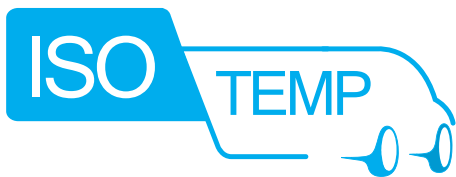
The IsoVan family of products include both IsoTemp and IsoChem. Both products are built with the same design that has been refined over four decades. IsoVan products are engineered specifically for the van they are installed in, resulting in a superior fit and finish.



IsoTemp

IsoTemp is a system of prefabricated, insulated panels that fit perfectly into each van they are designed for. The superior design of the IsoTemp system results in the industries best insulated performance and long-term durability, which is especially critical for food transport. The system is also able to be divided into up-to three separate temperature zones for vehicle flexibility. The floor drain and reefer plumbing behind the bulkhead allows for easy clean-up and maintenance.





IsoTemp by Gruau

IsoTemp is a fully isolated cargo van system with best-in-class insulation for refrigerated or heated applications.



Unit may be shown with optional features

Standard Features

- A** Modular, insulated fiberglass panels with best-in-class thermal insulation ($K < 0.38$)
- B** Fully insulated side and rear doors with superior double seals
- C** Bonded and double-sealed seams for minimal temperature loss and long-term durability
- D** Return flange floor design for superior seal, durability and cleanability
- E** Non-slip floor texture
- F** Integrated floor drain
- G** LED interior lighting
- H** Roof-mounted reefer unit plumbed on front of bulkhead for maintenance accessibility

**HACCP certified, USDA approved and FMVSS 201U compliant*

IsoTemp Advantages

IsoTemp kit
ideal for:



Food Delivery



Biomedical
Transport

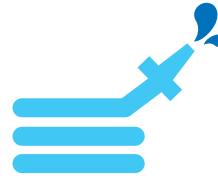


Catering



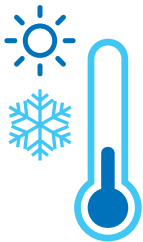
Industry's Best Insulation Performance

- Potential to use smaller reefer unit to achieve temperature maintenance
- Less fuel consumption, wear and tear on van
- Superior food safety



Easy To Clean

Sealed seams and integrated floor drain make cleaning quick and easy



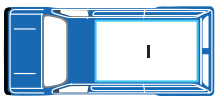
Customizable Up To 3 Temperature Zones

Optional inner panels separate load space in up to 3 sections

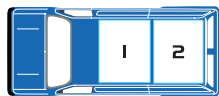


Long-term Durability

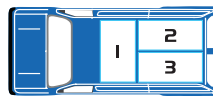
Return flange floor design and double-sealed, interlocking panel seams result in superior long-term durability



1 Zone Configuration

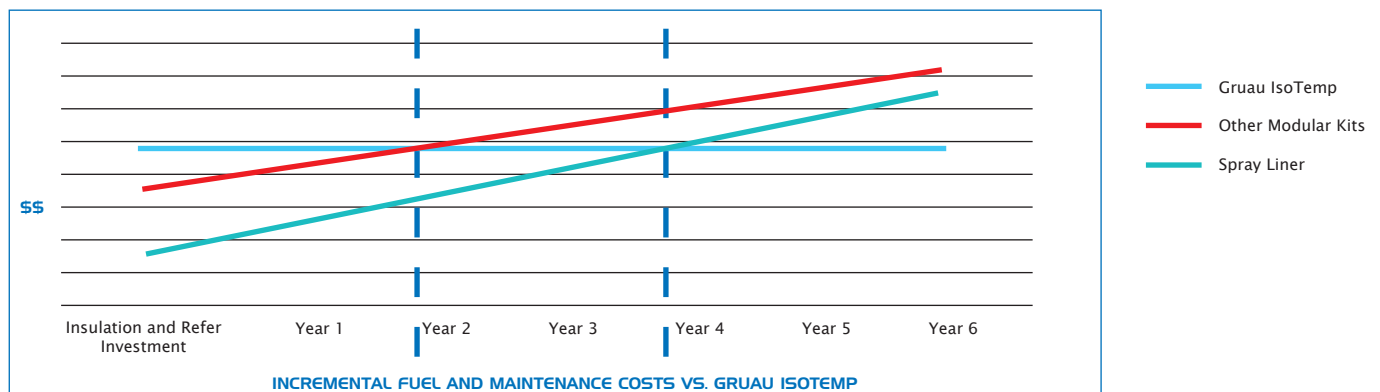


2 Zone Configuration



3 Zone Configuration

IsoTemp Return on Investment



*Calculation based on average price of cargo van insulation and refer price

**Incremental fuel and maintenance cost based on increased engine use with less efficient systems

Popular Options



■ Frozen application extra side door



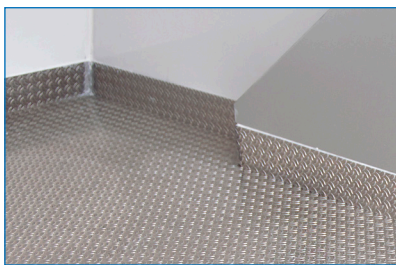
■ Anti-slip aluminum floor protection



■ Clear PVC strip curtains



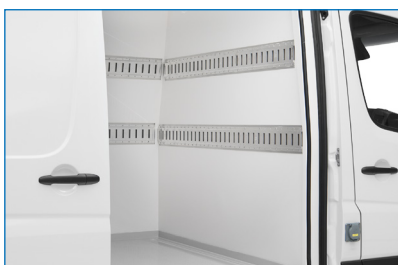
■ Stainless steel door step protection



■ Aluminum low side protection



■ Aluminum fold-down shelving



■ E-Track system



■ Reefer roof recess kit
Limited availability

IsoTemp Van Specifications

Van Make	Van Model	Wheelbase	Roof Height	IsoTemp Kit Available	Cargo Area Volume	Inner Length	Inner Width	Inner Height	Kit Weight
Mercedes-Benz	Metris	126 in.	Standard	Yes	131 cu. ft.	92 in.	58.26 in.	47.63 in.	427 lb.
	Sprinter	144 in. (Regular)	Standard (Low)	No					
		144 in. (Regular)	High	Yes	297 cu. ft.	123 in.	63.8 in.	70.7 in.	638 lb.
		170 in. (Long)	High	Yes	392 cu. ft.	164 in.	63.8 in.	70.7 in.	836 lb.
		170 in. (Long)	Super High	No					
		170 in. (Long Extended)	High	Yes	427 cu. ft.	179.7 in.	63.8 in.	70.7 in.	924 lb.
		170 in. (Long Extended)	Super High	No					

Thermo King Reefer Application

				Thermo King Direct Drive Application			
				10 Door Openings Per Day		30 Door Openings Per Day	
Van Make	Van Model	Wheelbase	Roof Height	Fresh (35°F)	Frozen (-4°F)	Fresh (35°F)	Frozen (-4°F)
Mercedes-Benz	Metris	126 in.	Standard	B100	Not Compatible	B100	Not Compatible
	Sprinter	144 in. (Regular)	High	V200	V300 Max	V200	V520 Max
		170 in. (Long)	High	V200	V520 Max	V300	V520 Max
		170 in. (Long Extended)	High	V200	V520 Max	V300	V520 Max

*Outside temperature up to 104°F. Check with your sales representative for outside temperatures over 104°F.

**Standard units have suffix "10." The "10" series does not offer power standby.

***Shore power units are represented with suffix "20." The "20" series is offered with 115/1/60 Hz, 220/1/60 Hz or 230/3/60 Hz power standby options.

Carrier Direct Reefer Application

				Carrier Direct Drive Application			
				10 Door Openings Per Day		30 Door Openings Per Day	
Van Make	Van Model	Wheelbase	Roof Height	Fresh (35°F)	Frozen (-4°F)	Fresh (35°F)	Frozen (-4°F)
Mercedes-Benz	Metris	126 in.	Standard	Not Compatible	Not Compatible	Not Compatible	Not Compatible
	Sprinter	144 in. (Regular)	High	30S	20X	30S	Not Enough Output
		170 in. (Long)	High	30S	Not Enough Output	30S	Not Enough Output
		170 in. (Long Extended)	High	30S	Not Enough Output	30S	Not Enough Output

*Outside temperature up to 104°F. Check with your sales representative for outside temperatures over 104°F.

**30S unit can be upgraded to include 115/1/60 Hz or 230/1/60 Hz electric standby

About Gruau



Gruau Group Headquarters
Laval, France

Gruau is a French, 5th generation family-owned company that has been in business for over 125 years, specializing in the conversions of light commercial vehicles. With over 1,110 employees and 50,000 conversions per year for customers and OEMs around the world, Gruau is Europe's leading body builder. Its 17 commercial and industrial facilities offer unique design, commercial and industrial capacity.

Gruau is a referenced supplier to 24 international vehicle brands and designs, manufactures and commercializes more than 20 product lines, and is supported by a network of over 125 distributors and dealers in Europe, North America, Africa and the Middle East.

Request a Quote

✉ todd@phenixent.com

☎ 800-736-9790

